



# The Balboa Inn - instructions for taxi driver

## Your home in Panama

If you have not arranged our airport transfer service and come by taxi, especially late at night, these instructions may help your driver find us. Remember, we're a relatively new kids on the block so few taxi drivers know we even exist. And as we still have to meet the first taxi driver who can read maps, they are not of much use either. However, we have included one below for your own reference.

[Inn Home](#)

[Why us](#)

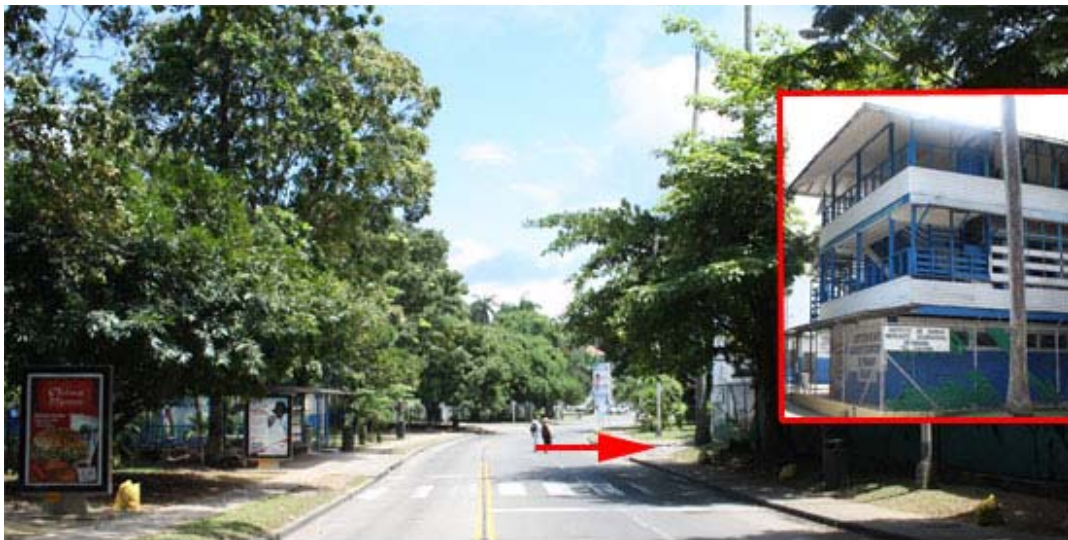
[Rooms](#)

[Location](#)


So print this page and take it with you ([PDF version](#))

- *Quiero ir a Balboa (area revertida). Primero al Instituto Marina Mercante (vea foto abajo) el cual se encuentra frente la escuela Bolivar. Allí entramos. A cien metros hay una intersección: seguimos recto, pasando **5 policías muertas** . Despues del*

*quinto, apenas saliendo de la curva esta la casa **2311a** a mano derecha. Tiene un escudo pintado en la pared de la cochera que dice 'Balboa Inn'..*



Entering Balboa when coming from Ave. de los Martires; take a right at the "Instituto de Marina Mercante". It's a white with blue building on the corner.

 instructions for taxi driver

[Services](#)

[Rates & reservation](#)

[Things to do](#)

[More about Panama](#)

[Image gallery](#)

[Guest comments](#)

[FAQ](#)

[Recommended links](#)

[Book Online](#)



**The Balboa Inn**  
Las Cruces 2311a  
Hostal Familiar