

Getting here FROM Tocumen International Airport

If you have not arranged our airport transfer service and by rental, please print these instructions to find us. We haven't been in business that long so we are not quite a landmark yet. It's really not difficult and the new 'Cinta Costera' along the bay of Panama has made getting to Balboa even easier. But these maps will make sure you can't get lost while driving to the Balboa Inn or worse, call us out of our bed at 2 in the morning :-)

Here's the big overview picture. When you leave the airport compound, look for the 'Corredor Sur' signs. The exit to the 'Corredor Sur' will be on your right hand, just after passing a bridge.



After 2 toll booths (currently \$ 1.45 and \$.090), about 12 miles of driving and passing a **1/2 mile tunnel**, look for Avenida Balboa Viaducto sign and take that route. You'll end up on the recently

renewed Avenida Balboa now called 'Cinta Costera' (but don't expect a sign). Follow it all the way to the end (just over one and a half mile).

Now, pay attention. Here's the detail of the last mile.



Look at the numbers on the map above for these helpful hints:

(1)

At the end of this beautiful 'Cinta Costera' keep left to go up ramp. See next picture. If you go under the overpass you see in the picture, you went too far. If you straight you'll end up in a very dodgy neighborhood. **So don't miss this one!!** If you do, make a U-turn at the earliest convenience, then look for signs 'retorno' to make another U-turn and try again.



(3)

Depending on the time of the day, you'll enter a busy road. This is Avenida de los Martires. Stay in the right lane. After just over 1/2 mile you'll see an Esso gas station on your left hand. Continue straight.



(2)

After almost 1/5 of a mile on the overpass, keep left to leave the overpass (sign: Ave. de los Martires).



(4)

The road is now going downhill. Remember to stay in the right lane because in about 1/4 of a mile there's an exit to your right; see the next picture. Take it.

If for whatever reason you miss it, take the next exit that says "Amador". Make a right turn when you can and follow the signs to 'Balboa'.

If you end up on the Bridge of the Americas, you know you missed that exit too and you will end up in North America.

(We know you won't do that of course but if it happens..... take the first exit after the bridge (right hand), follow that road. It takes you through a wooded area, under the bridge, then uphill, then downhill. Take a right on the intersection you'll find after about 1.5 miles. That will get you back on the bridge after 1/2 mile. Take the first exit on your right after the bridge. After coming down from the ramp (sort of U-turn), take a right. That will take you into Balboa. At the traffic light, turn right, then – after about 150

m/yards -take the first left. That's where the Instituto Marina Mercante is. Follow rest of instructions on the next page) .



If for whatever reason you miss it, take the next exit that says "Amador". Make a U-turn when you can and follow the signs to 'Balboa'. If you end up on the Bridge of the Americas, you know you missed that exit too and you will end up in North America!

(5)

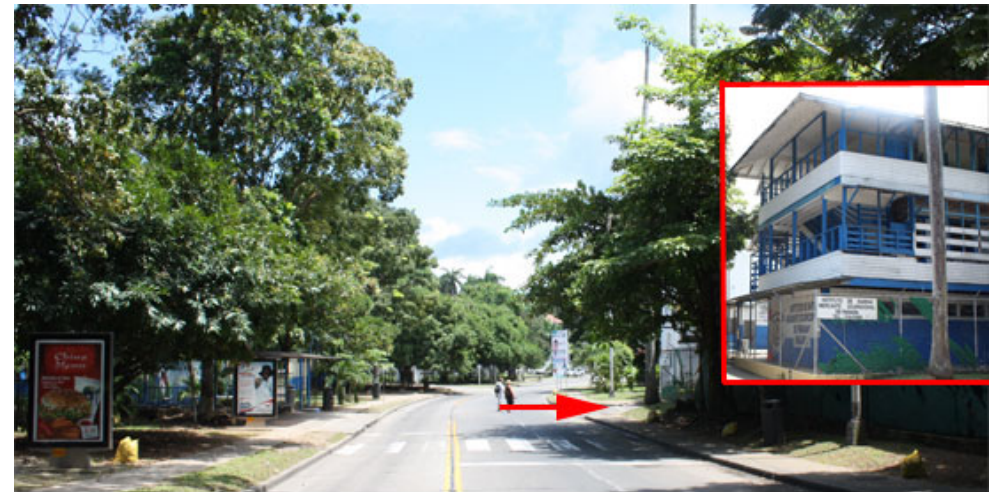
But you are a born navigator so after taking the exit, within 1/2 mile you'll end up in Balboa. Take a right as indicated below. If you drive at night, it's the second street on your right hand.

Our phone numbers: 314-1520 / 6618-4414 (mobile).

Official address: Las Cruces 2311-A, Balboa (area revertida)

Have a GPS? Look for 'accommodations, Balboa Inn'

Please print this page NOW!



Entering Balboa when coming from Ave. de los Martires; take a right at the "Instituto de Marina Mercante". It's a white with blue building on the corner.

OK. You're almost there. You are now entering a very nice residential neighborhood with lots of trees. After the 5th speedbump, we're the next building on your right hand . The left part of a duplex: # 2311-A.

Welcome to the Balboa Inn!

